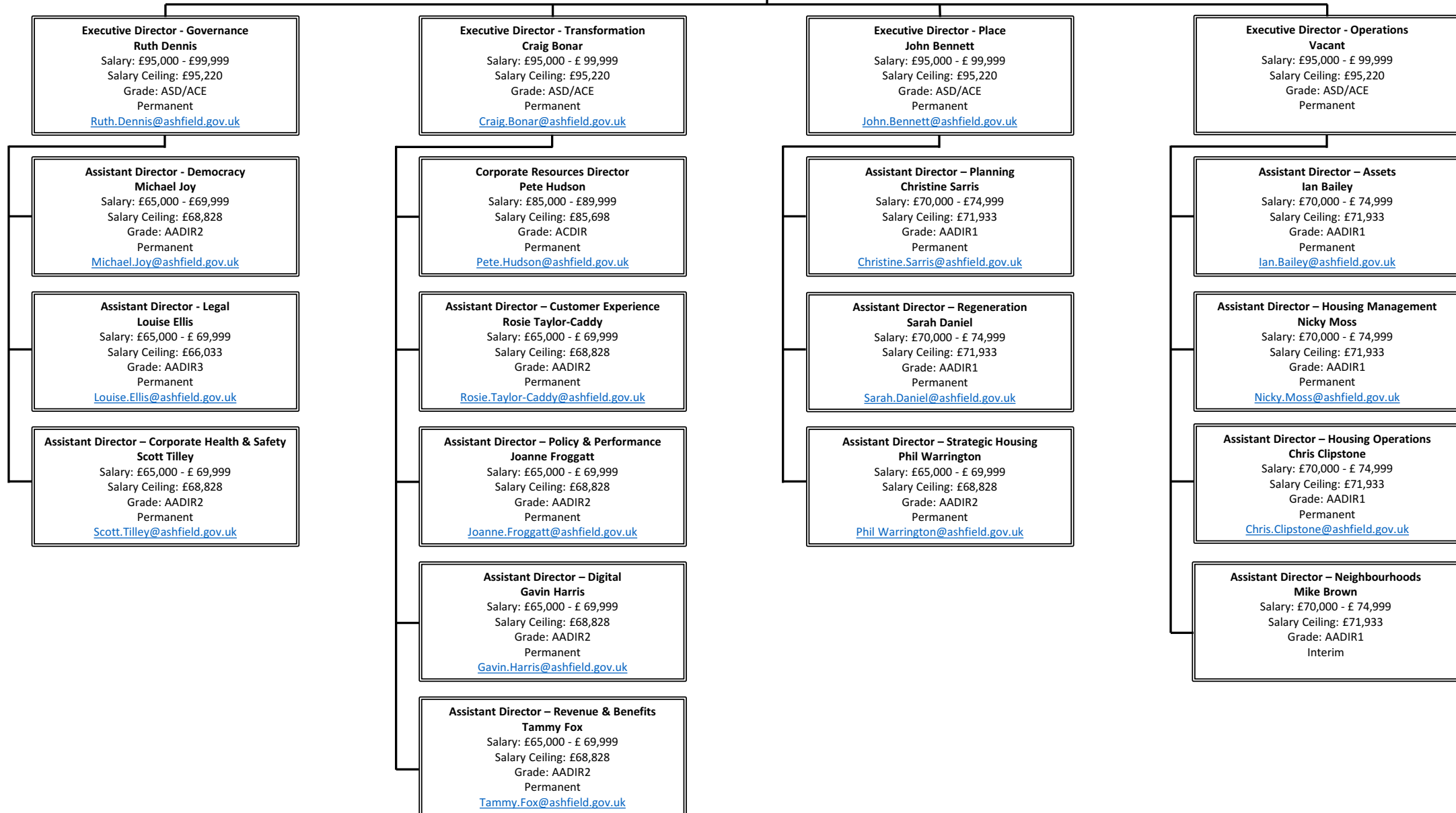


# Ashfield District Council Organisational Chart

30<sup>th</sup> May 2024



**Chief Executive Officer**  
**Theresa Hodgkinson**  
Salary: £125,000 - £129,999  
Salary Ceiling: £129,158  
Grade: ACEO  
Permanent  
[Theresa.Hodgkinson@ashfield.gov.uk](mailto:Theresa.Hodgkinson@ashfield.gov.uk)



**Ashfield District Council Senior Salaries Table**  
**30<sup>th</sup> May 2024**

<b>Pay Bracket</b>	<b>No of employees</b>
£50,000 to £54,999	7
£55,000 to £59,999	0
£60,000 to £64,999	0
£65,000 to £69,999	8
£70,000 to £74,999	5
£75,000 to £79,999	0
£80,000 to £84,999	0
£85,000 to £89,999	1
£90,000 to £94,999	0
£95,000 to £99,999	3
£100,000 to £104,999	0
£105,000 to £109,999	0
£110,00 to £114,999	0
£115,000 to £119,999	0
£120,000 to £124,999	0
£125,000 to £129,999	1

# Ashfield District Council Senior Salaries

## 30<sup>th</sup> May 2024



Post	Directorate	Section	Grade	Salary Band	Contract	Direct Reports
Chief Executive Officer			ACEO	£125,000 to £129,999	Permanent	Executive Director – Governance, Executive Director – Transformation, Executive Director – Place, Executive Director – Operations
Executive Director - Governance	Governance		ASD/ACE	£95,000 to £99,999	Permanent	Assistant Director – Democracy, Assistant Director – Legal, Assistant Director - Corporate Health & Safety
Executive Director - Transformation	Transformation		ASD/ACE	£95,000 to £99,999	Permanent	Assistant Director - Corporate Resources, Assistant Director - Customer Experience, Assistant Director - Policy & Performance, Assistant Director - Revenue & Benefits, Assistant Director – Digital
Executive Director - Place	Place		ASD/ACE	£95,000 to £99,999	Permanent	Assistant Director – Planning, Assistant Director – Regeneration, Assistant Director - Strategic Housing, Assistant Director - Community Safety
Executive Director - Operations	Operations		ASD/ACE	£95,000 to £99,999	Vacant	Assistant Director - Housing Management, Assistant Director - Housing Operations, Assistant Director – Assets, Assistant Director – Neighbourhoods
Corporate Resources Director	Transformation	Corporate Resources	ACDIR	£85,000 to £89,999	Permanent	
Assistant Director - Assets	Operations	Assets	AADIR1	£70,000 to £74,999	Permanent	
Assistant Director - Housing Management	Operations	Housing Management	AADIR1	£70,000 to £74,999	Permanent	
Assistant Director - Housing Operations	Operations	Housing Operations	AADIR1	£70,000 to £74,999	Permanent	
Assistant Director - Planning	Place	Planning	AADIR1	£70,000 to £74,999	Permanent	
Assistant Director - Regeneration	Place	Regeneration	AADIR1	£70,000 to £74,999	Permanent	
Assistant Director - Neighbourhoods	Operations	Neighbourhoods	AADIR1	£70,000 to £74,999	Vacant	
Assistant Director - Corp Health and Safety	Governance	Corp Health and Safety	AADIR2	£65,000 to £69,999	Permanent	
Assistant Director - Democracy	Governance	Democracy	AADIR2	£65,000 to £69,999	Permanent	
Assistant Director - Strategic Housing	Place	Strategic Housing	AADIR2	£65,000 to £69,999	Permanent	
Assistant Director - Customer Experience	Transformation	Customer Experience	AADIR2	£65,000 to £69,999	Permanent	
Assistant Director - Policy and Performance	Transformation	Policy and Performance	AADIR2	£65,000 to £69,999	Permanent	
Assistant Director - Revenues and Benefits	Transformation	Revenues and Benefits	AADIR2	£65,000 to £69,999	Permanent	
Assistant Director - Digital	Transformation	Digital	AADIR2	£65,000 to £69,999	Permanent	
Assistant Director - Legal	Governance	Legal	AADIR3	£65,000 to £69,999	Permanent	
Service Manager - Commercial Development	Transformation	Commerical Development	ADC Grade K	£50,000 to £54,999	Permanent	
Financial Services Manager	Transformation	Corporate Resources	ADC Grade K	£50,000 to £54,999	Permanent	
Service Manager - ICT	Transformation	ICT	ADC Grade K	£50,000 to £54,999	Permanent	
Strategic Asset Manager	Operations	Assets	ADC Grade J	£50,000 to £54,999	Permanent	
Planned, Cyclical and Estates Maint Mgr	Operations	Housing Operations	ADC Grade J	£50,000 to £54,999	Permanent	
Responsive and Voids Maintenance Mgr	Operations	Housing Operations	ADC Grade J	£50,000 to £54,999	Permanent	
Fwd Planning and Econ Growth Team Man	Place	Planning	ADC Grade J	£50,000 to £54,999	Permanent	