

HSE's Advice

Your development does not intersect a pipeline or hazard zone, HSE Planning Advice does not have an interest in the development.

Our Reference : **HSL-240214125219-141**

Your Reference : **V/2022/0629**

Development Name : **Land at Newark Road, Coxmoor Road, Sutton in Ashfield.**

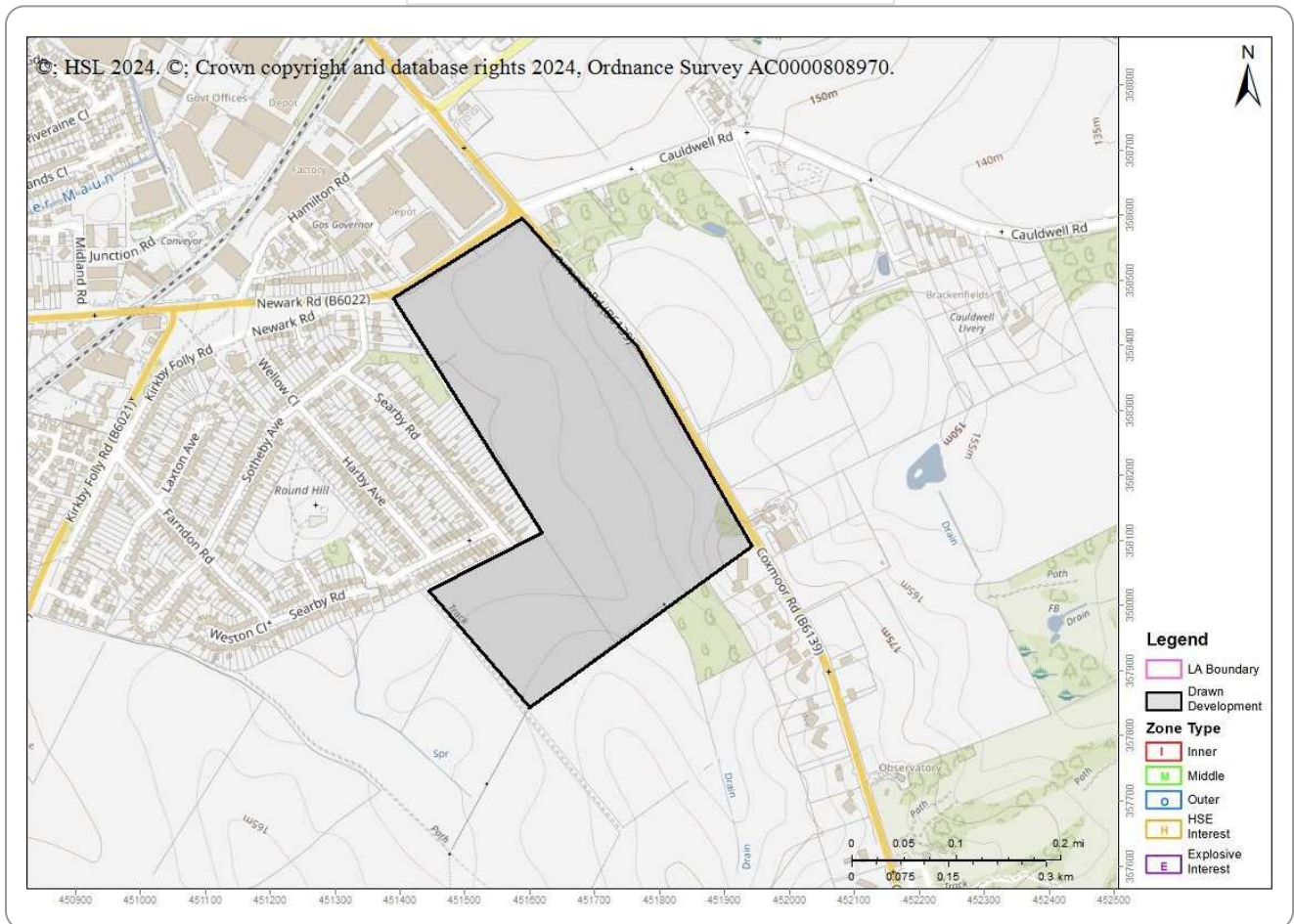
Date Created : **14/02/2024 12:52:19**

Description/Comments : **Outline planning application (with all matters reserved except access) for a residential development of up to 300 dwellings with associated infrastructure and landscaping**

Created By : **Mick.Morley@Ashfield.gov.uk**

Phase 1 documents
No HI/MHP Interest Report
(../Download/File/?HSLRefer=HSL-240214125219-141&DownloadType=HSEHasNoInterest)

Please check all mapping details, including the drawn planning boundary and background mapping, are correct.



Menu

